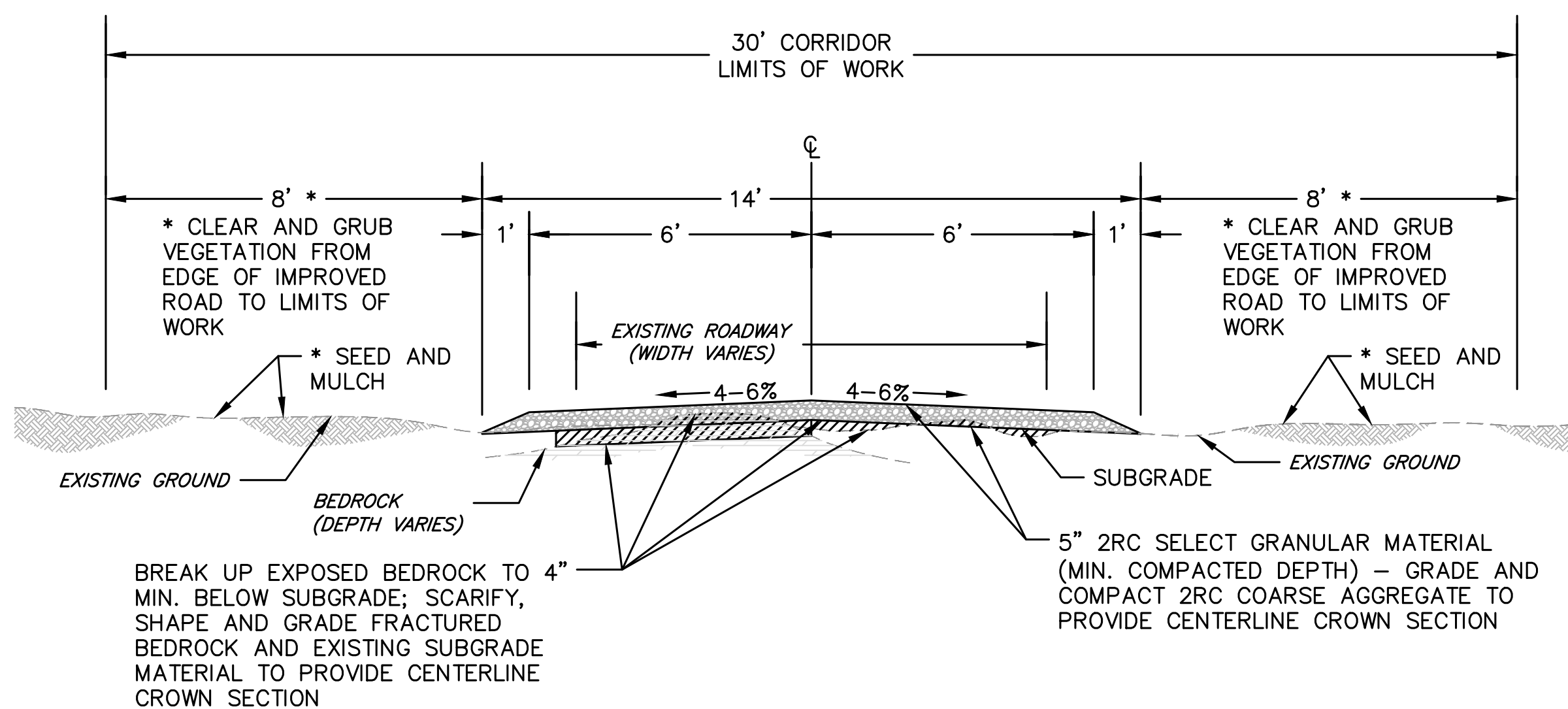


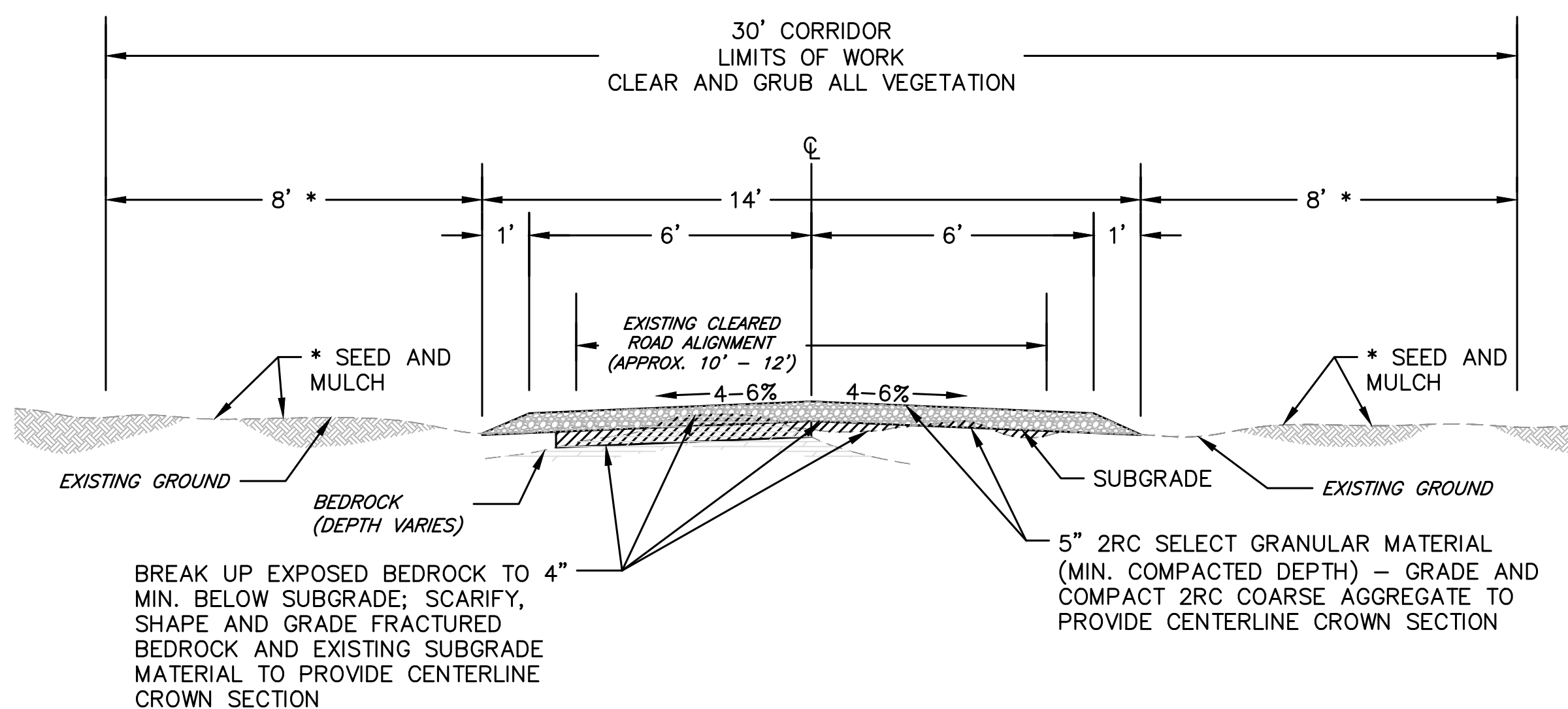
**GENERAL NOTES:**

1. SGL #48 IS LOCATED IN CUMBERLAND VALLEY AND LONDONBERRY TOWNSHIPS, BEDFORD COUNTY. THE PROJECT SITE (SCRUB OAK ROAD) IS LOCATED ALONG THE RIDGE OF WILLS MOUNTAIN AT THE END OF WILLS MOUNTAIN ROAD WHICH IS THE MAIN VEHICLE ACCESS ROAD TO SGL #48 FROM THE EAST. WILLS MOUNTAIN ROAD BEGINS AT A GATE NEAR THE GAME LANDS BOUNDARY AT THE FOOT OF WILLS MOUNTAIN AND THE JUNCTION WITH PARADISE ROAD. THE PGC OWNS PROPERTY AT THE INTERSECTION OF PARADISE ROAD AND US 220. PARADISE ROAD INTERSECTS WITH US 220 APPROXIMATELY 9 MILES SOUTH OF BEDFORD AND 1.5 MILES NORTH OF THE VILLAGE OF PATIENCE. THE PROJECT AREA (SEGMENT 1) STARTS APPROXIMATELY 5.45 MILES FROM THE INTERSECTION OF PARADISE ROAD AND US 220.
2. WORK HOURS SHALL BE DURING NORMAL PGC BUSINESS HOURS MONDAY - FRIDAY, 7:45 AM TO 4:00 PM. DIFFERENT WORK HOURS MUST HAVE PRIOR WRITTEN APPROVAL BY THE PGC. REQUESTS FOR DIFFERENT WORK HOURS MUST BE SUBMITTED AT LEAST TWO DAYS IN ADVANCE.
3. THE PROJECT SITE IS ACCESSIBLE FROM US ROUTE 220 AND PARADISE ROAD / WILLS MOUNTAIN ROAD (SGL #48 ACCESS ROAD). COORDINATE ACCESS THROUGH PGC GATES WITH PGC STAFF.
4. DO NOT BLOCK TRAFFIC ON PUBLIC OR PRIVATE ROADWAYS DURING CONSTRUCTION. DO NOT USE PUBLIC OR PRIVATE RIGHT-OF-WAY TO STAGE EQUIPMENT AND MATERIALS DURING CONSTRUCTION.
5. THE CONTRACTOR SHALL FURNISH AND INSTALL SIGNS, BARRICADES, WARNING TAPES, ETC. AS REQUIRED TO PROTECT AND LIMIT ACCESS TO WORK AREAS.
6. THE CONTRACTOR SHALL COMPLY WITH ALL STATE GAME LANDS REGULATIONS.
7. PROVIDE AN EMERGENCY SPILL KIT AVAILABLE AT ALL TIMES DURING ACTIVE OPERATIONS ON THE PROJECT SITE.



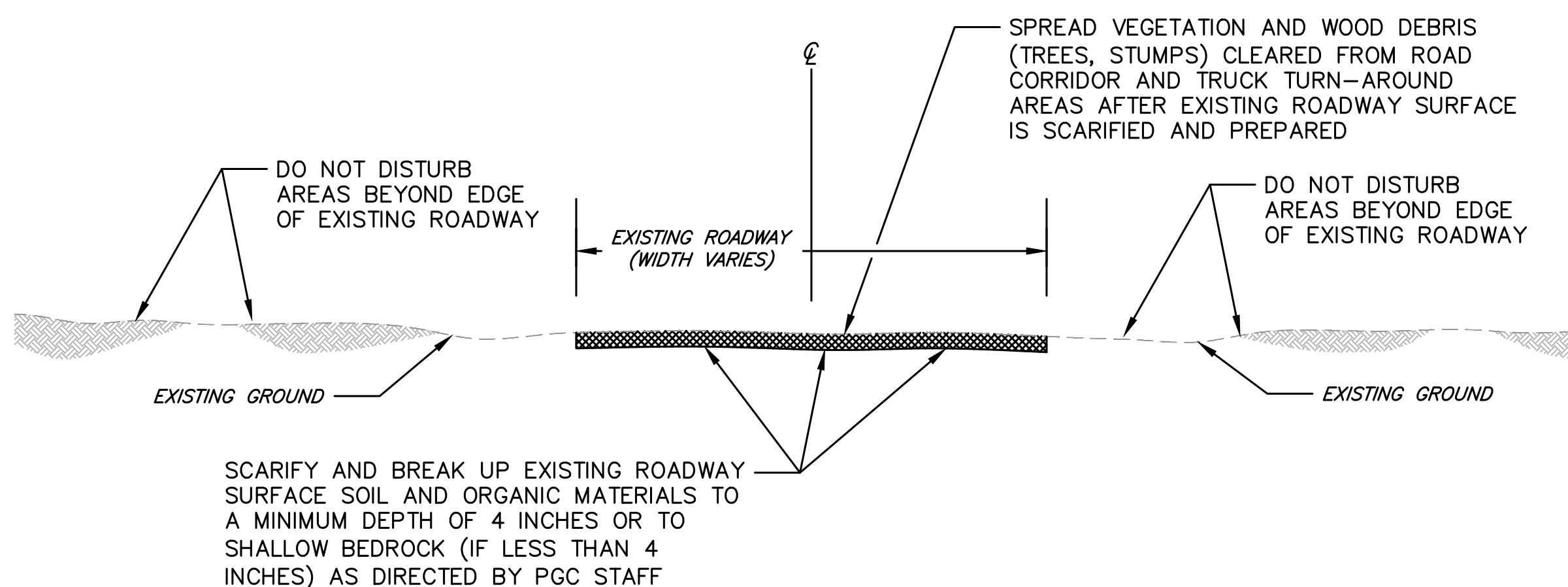
**DETAIL 1 - TYPICAL ROADWAY SECTION - SEGMENTS 1, 3, 5, 7, 9**

SCALE: 3/8 IN = 1 FT



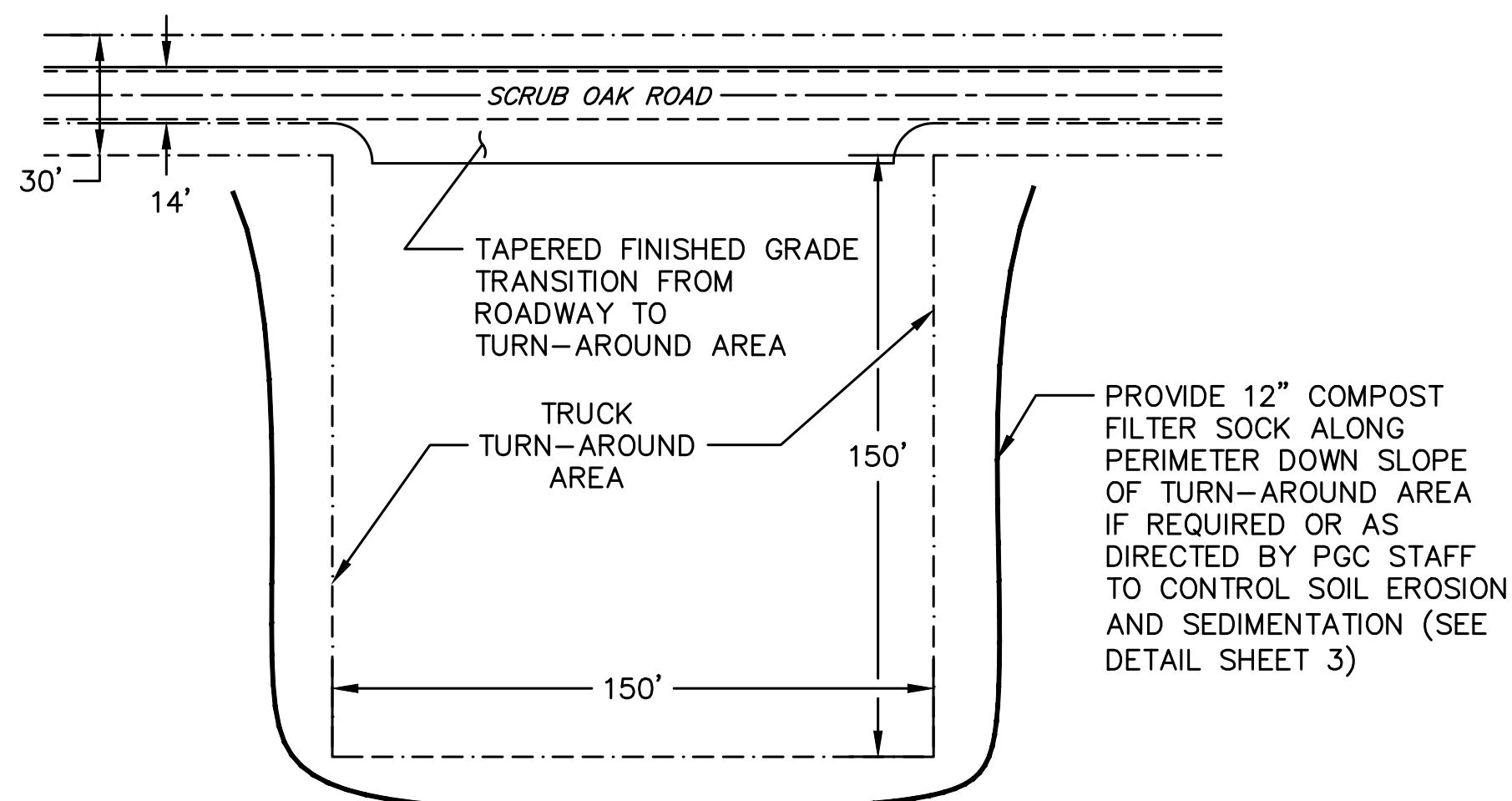
**DETAIL 2 - TYPICAL ROADWAY SECTION - SEGMENTS 2, 4, 6, 8**

SCALE: 3/8 IN = 1 FT



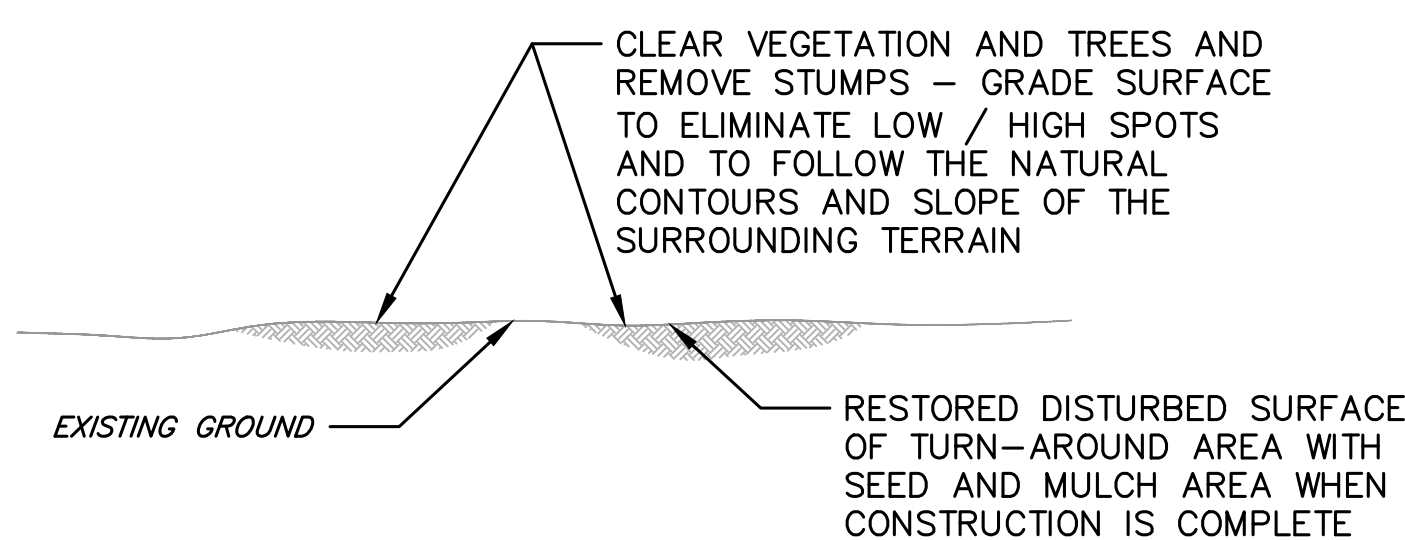
**DETAIL 3 - TYPICAL ROADWAY SECTION - SEGMENTS 10 - 15**

SCALE: 3/8 IN = 1 FT



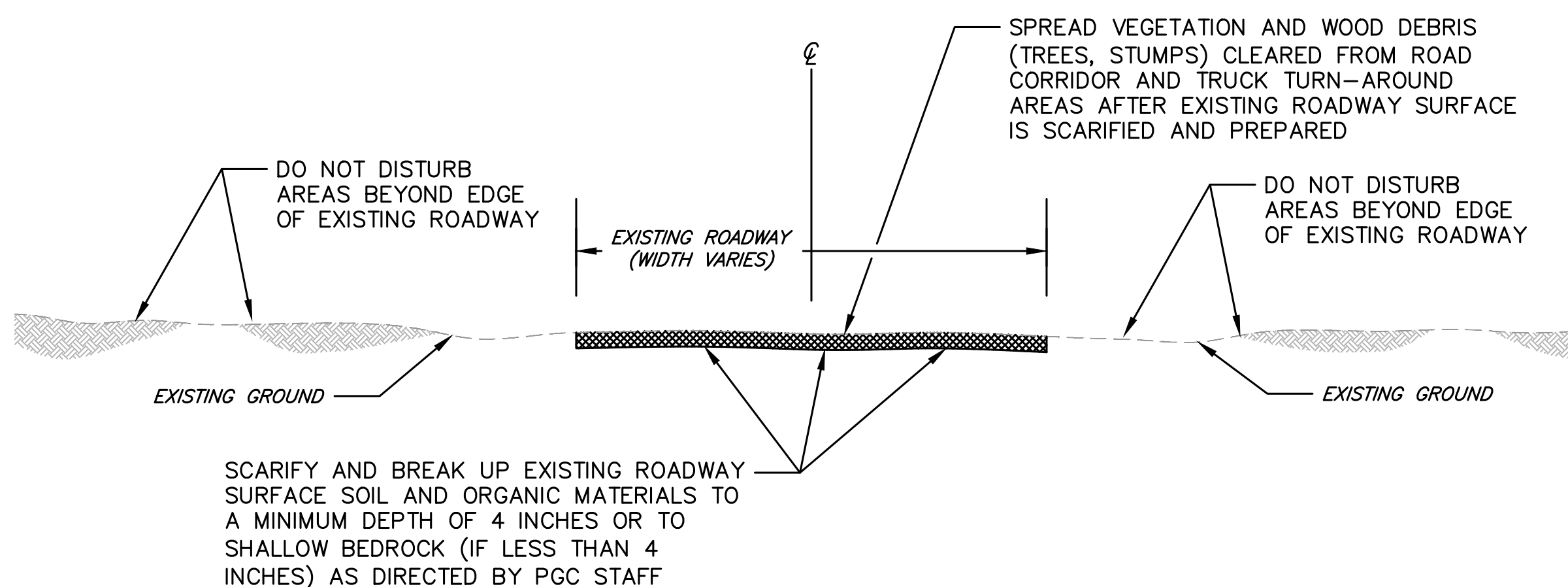
**DETAIL 4A - TYPICAL TRUCK TURN-AROUND AREA - PLAN**

SCALE: 1 IN = 40 FT



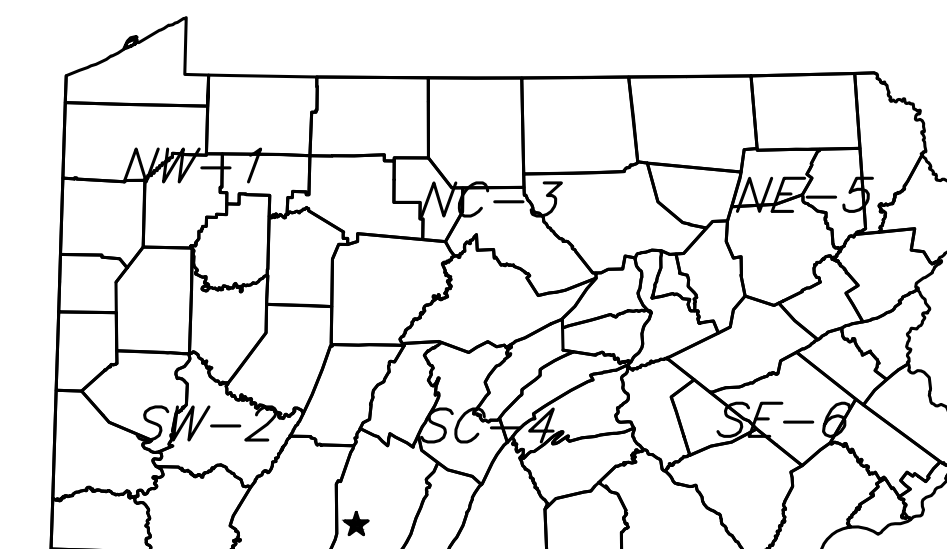
**DETAIL 4B - TYPICAL TRUCK TURN-AROUND AREA - SECTION**

NOT TO SCALE

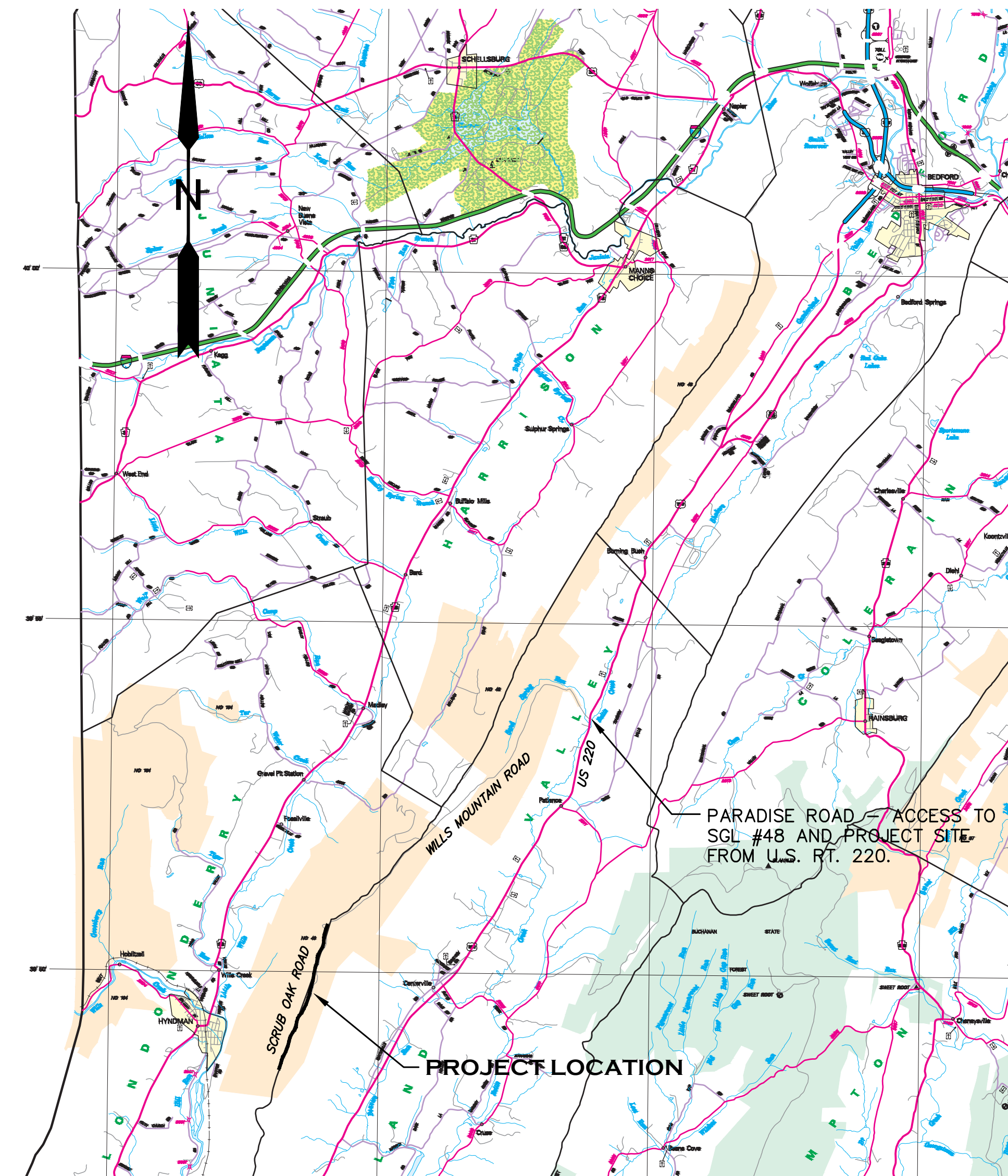


**DETAIL 3 - TYPICAL ROADWAY SECTION - SEGMENTS 10 - 15**

SCALE: 3/8 IN = 1 FT



\* = GEO N39.845282' / -78.681174'W



**LOCATION MAP**  
NOT TO SCALE



March 30, 2020

PENNSYLVANIA GAME COMMISSION		
STATE GAME LANDS #048	CUMBERLAND VALLEY AND LONDONBERRY TWP.	BEDFORD CO.
SCRUB OAK ROAD IMPROVEMENT PROJECT		
NOTES - LOCATION MAP - DETAILS		
REVISIONS	PROJECT NO.	PGC-048-20-01
	DRAWN BY:	A. KEIRN
	DATE:	3/30/2020
	SHEET NO.	1 OF 3